



File was found and ready to download!

UPDATED 14 HOUES AGO

Fastest Source: [usenet.nl](#)

Click the **download button** and select one of the found **cloud sources**.

6.4



2865 VIEWS

Download 

 SECURE SCANNED

You need to [log in](#) before you can post comments.



Navigation

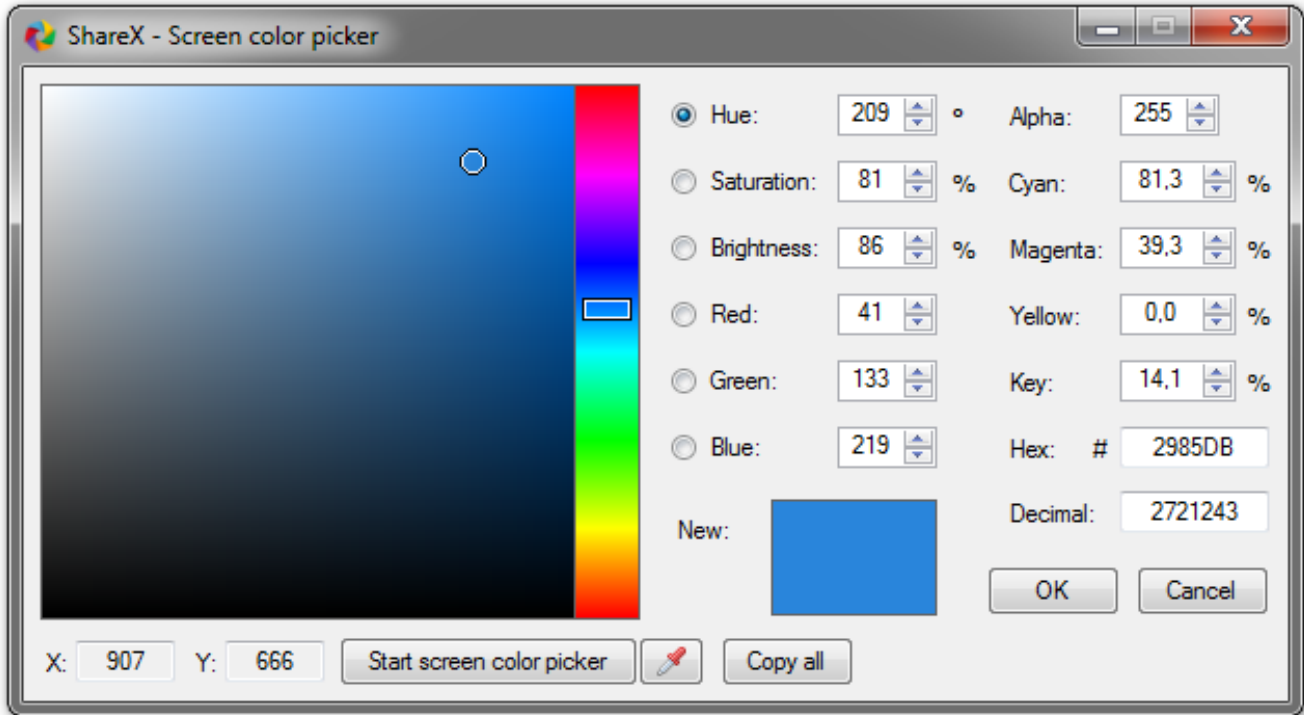


Registration



FAQ

[Hsl To Rgb Conversion Free Download For Mac](#)



[Hsl To Rgb Conversion Free Download For Mac](#)



File was found and ready to download!

UPDATED 14 HOUES AGO

Fastest Source: [useenet.nl](#)

Click the **download button** and select one of the found **cloud sources**.

6.4



2865 VIEWS

Download 

 SECURE SCANNED

You need to [log in](#) before you can post comments.



Navigation



Registration



FAQ

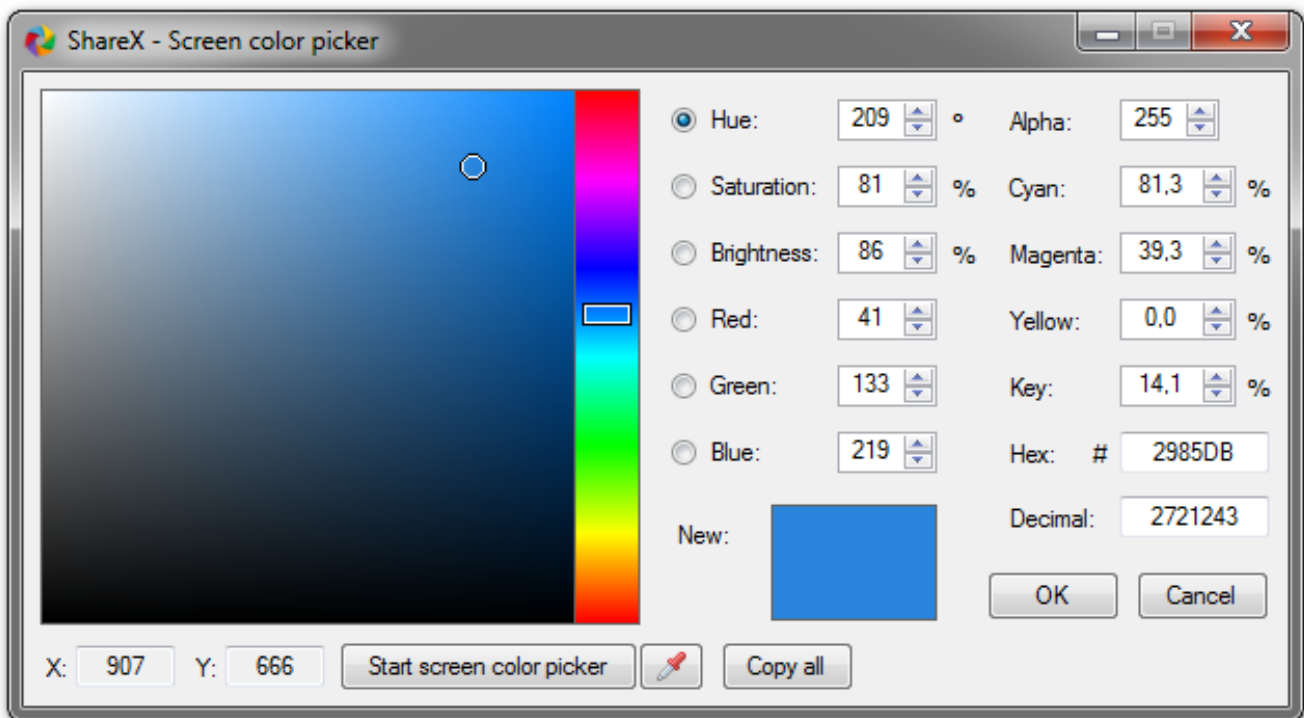
---

In other words, Red, Green and Blue values (known as the three primary colors) are combined to reproduce other colors.

Formula for converting RGB to HSL To change the range from 0 to 255 into 0 to 1, the red, green and blue values are divided by 255.

[Auto Tune FI Studio 20](#)

6% Lightness (L): 16 1% The color preview of the above HSL values can be visualized at the bottom panel of the converter.. \* Nine formats of colour codes: HTML, RGB, HEX, HSB/HSV, HSL, CMYK and their variations.. Conversion of HTML, HEX and RGB colour codes into the corresponding colours \*Averaged colour sampling for easy handling of colour noise with 3x, 9x and 15x magnifier for greater precision.. RGB to HSL Conversion It is a color conversion calculator used to convert red, green and blue colors (RGB) to hue, saturation, and lightness (HSL).. You can also enter the red, green and blue colors in their blank text fields respectively. [Angry Birds Mac Download](#)



[Dreamplan Home Style Software For Mac](#)

[yawman ma julia boutros](#)

The color preview of the HSV result is indicated at the bottom platform of the calculator. [Media Player Download For Mac Os X](#)

[Crack Factorytalk View Studio 7.0](#)

---

Hue is expressed in degrees while saturation and lightness are often expressed as percentages.. The conversion result of hue, saturation, and lightness will be displayed below the two controls..  $R' = R/255$   $G' = G/255$   $B' = B/255$   $C_{max} = \max(R', G', B')$   $C_{min} = \min(R', G', B')$   $\Delta = C_{max} - C_{min}$  Hue Calculation  $0^\circ \Delta = 0$   $60^\circ \times (G' - B' \Delta \text{mod} 6)$ ,  $C_{max} = R'$   $60^\circ \times (B' - R' \Delta + 2)$ ,  $C_{max} = G'$   $60^\circ \times (R' - G' \Delta + 4)$ ,  $C_{max} = B'$  Saturation calculation  $0, \Delta = 0$   $\Delta / 1 - /2L - 1/, \Delta 0$  Lightness calculation  $L = (C_{max} + C_{min}) / 2$ .. I am looking for a tool or the algorithm to convert between HSL color to RGB It seems to me that HSL is not very widely used so I am not having much luck searching for a converter.. To use the calculator, enter the RGB hex code in the initial blank text field and then click the 'Convert' button.. The hex code is designated by both letters and numbers and the RGB values range from 0 to 255.. Initiate the conversion by clicking the 'Convert' button The conversion result will be displayed as; Hue (H): 266 degrees Saturation (S): 36. e828bfe731 [Serial Lock Folder Xp 3.9.2](#)

e828bfe731

[Mercury Interactive Corporation](#)